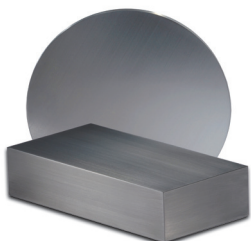


# TCI Equipment List - Contract Machining

Vertical Machining Centers		Qty	Model	Taper	X	Y	Z	4/5 Axis	Repeatability
<b>Robodrill</b>		1	Robodrill T10B	CAT 40	20"	11"	15"	4	0.0002"
		1	Robodrill T14iA	CAT 40	20"	15"	12"	4	0.0002"
<b>Haas</b>		1	Haas VF-3	CAT 40	40"	20"	25"	4	0.0002"
		1	Haas VF-6/50	CAT 50	64"	32"	30"	4	0.0002"
<b>Mazak</b>		1	Mazak AJV-35/60 w/2-pallets	CAT 50	60"	30"	24"	4	0.0002"
		1	Mazak AJV-35/60	CAT 50	60"	31.5"	20"	4	0.0002"
		1	Mazak AJV-35/80 w/2-pallets	CAT 50	78.75"	31.5"	20"	4	0.0002"
		1	Mazak AJV-35/80	CAT 50	78.75"	31.5"	20"	4	0.0002"
		1	Mazak AJV-60/160	CAT 50	166"	55"	20"	4	0.0002"
<b>Viper</b>		1	Viper 850	CAT 40	30"	20"	25"	4	0.0002"
		1	Viper 1600	CAT 50	62"	31"	25"	4	0.0002"
		1	Viper B3000	CAT 50	121"	77"	28"	4	0.0002"
		1	Viper PRO 3210	CAT 50	121"	79"	28"	4	0.0002"
Horizontal Machining Centers		Qty	Model	Taper	X	Y	Z	4/5 Axis	Repeatability
<b>Mori Seiki</b>		1	Mori Seiki SH-403	CAT 40	22"	20"	13"	4	0.0002"
		1	Mori Seiki NH-5000	CAT 50	26"	27"	29"	4	0.0002"
		1	Mori Seiki NH-5000 DCG/50 w/6CPP Pallet Pool	CAT 50	28.7"	28.7"	33.5"	4	0.0002"
		1	Mori Seiki NH-6300 DCG/50	CAT 50	35.4"	31.5"	38.6"	4	0.0002"
<b>Haas</b>		1	Haas EC-3000	CAT 50	120"	40"	32"	4	0.0002"
		2	Haas EC-1600	CAT 50	64"	40"	32"	5	0.0002"
CNC Turning Centers		Qty	Model	Chuck	X	Swing	Z	Repeatability	
<b>Okuma</b>		2	Okuma L1420	12"	14.1"	20"	25.5"	0.0002"	
<b>Mori Seiki</b>		1	Mori Seiki ZL-15SM	10"	6"	12"	12"	0.0002"	
		1	Mori Seiki SL-403B/2000	15"	13.6"	36.8"	86.5"	0.0002"	
<b>Haas</b>		2	Haas SL-30	12"	11.3"	14.5"	34"	0.0002"	
		1	Haas SL-40	15"	17"	25"	44"	0.0002"	
Engineering Software		Seats	Software	Version	File Transfer Formats				
		1	GibbsCam 2009	9.3	IGES, DXF, DWG, CATIA V4, Parasolid, SolidWorks, PRO E, plus more				
		1	Autocad 2005	400/401	IGES, DXF, DWG, plus more				
		1	EdgeCam	4.51	IGES, DXF, DWG, plus more				
		1	Mastercam	X3	IGES, DXF, DWG, plus more				
		1	Vericut	6.1.2					
		1	Key Creator	8					
Quality Assurance		Qty	Model						
<b>Coordinate Measuring Machines</b>		1	Mitutoyo BRT 1220 DCC Microcord Coordinate Measuring Machine PH9/TP200 Renishaw Probe Resolution .00002" – Capacity x-48", y-79", z-40" – MCOSMOS						
		1	Mitutoyo BRT 710 DCC Microcord Coordinate Measuring Machine PH9/TP200 Renishaw Probe Resolution .00002" – Capacity x-27.7", y-39.6", z-23.8" – MCOSMOS						
		1	Sheffield Cordax 1808 Coordinate Measuring Machine Resolution .0001" – Capacity x-29", y-24", z-17"						
		1	Check Master Coordinate Measuring Machine Resolution .0005" – Capacity x-18", z-38", z-60"						
<b>Inspection Tools</b>		900	Other Inspection Tools						

Vertical & Horizontal Machining • Turning • Engineering Services • Grinding • Duplex Milling



800.234.5613 | [www.tciprecision.com](http://www.tciprecision.com)



AS 9100