

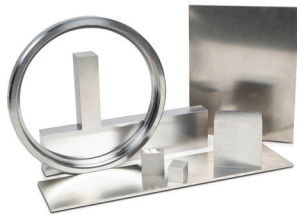
# Increase Productivity Even More with Machine-Ready Solutions from TCI

As a value-added metals distributor we are committed to saving you time and money. Let us know if we can further support your business in any of the following ways—

## Custom Machine-Ready Blanks

Custom Machine-Ready Blanks are produced to your specifications in aluminum, stainless, or other alloys, and are ready to go directly from receiving into your CNC machining center.

- Order one to thousands
- Finished 6-sides
- As tight as  $\pm .0005''$  dimensionally
- As tight as  $.0002''$  flatness, squareness, and parallelism



## FLAT Machine-Ready Blanks

FLAT Machine-Ready Blanks from TCI resist part movement during finish machining. We consider the direction of the material grain relative to your finished part, and utilize double-disc grinding, which removes equal amounts of material from both sides, reducing inherent stress in the metal.

- Resists distortion or part movement
- As tight as  $\pm .0005''$  dimensionally
- As tight as  $.0002''$  flatness, squareness, and parallelism



## Standard Machine-Ready Blanks

Available from

**McMASTER-CARR®**

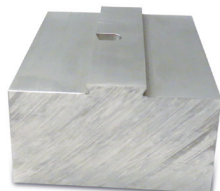
Get the same high-quality Machine-Ready Blanks, finished on six-sides, and available in a variety of materials, and standard dimensions.

- As tight as  $.0002''$  flatness, squareness, and parallelism
- All dimensions  $\pm .002''$

## Dovetail Machine-Ready Blanks

Sized to order, including a precision dovetail feature to match your workholding fixture. Available in aluminum, stainless, and other alloys.

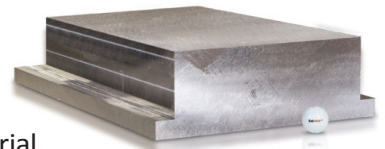
- Eliminate material prep
- Ideal for 4 and 5-axis machining
- Ready to load directly into dovetail workholding fixture



## Feature-Added Blanks

We have the equipment and expertise to produce Machine-Ready Blanks that require special features to be added, or removal of large amounts of material, saving time, and wear and tear on your equipment.

- One or more added features
  - Chamfers
  - Holes
  - Pockets
  - Channels
- Large amounts of material removal – hog outs



## Waterjet Cutting Services

Our waterjet cutting services use the most advanced equipment available, with patented Tilt-A-Jet cutting head that ensures high precision, square, finished edge cuts.

- Fast turn-around
- Aluminum, stainless steel, and other alloys in inventory
- Fastest cutting speeds and best precision compared to any abrasive jet in the industry
- Capable of machining a wide range of materials and thicknesses, from metals and composites to glass and plastics



## Precision Vice Jaws

Custom vise jaw plates in a variety of materials, including aluminum, steel, other alloys, polyurethane and more.

- Precision ground/milled
- Tolerances:  $\pm .002''$  All Dimensions
- Flatness: within  $.002''$
- Immediately available from McMaster Carr in 1018 steel and 6061 aluminum



**Let us help you save even more time and money.**

For more information, contact us today.